



A socio-economic profile of Tipperary Town

David Meredith, Teagasc

January 16th 2020

Excel Centre, Tipperary.

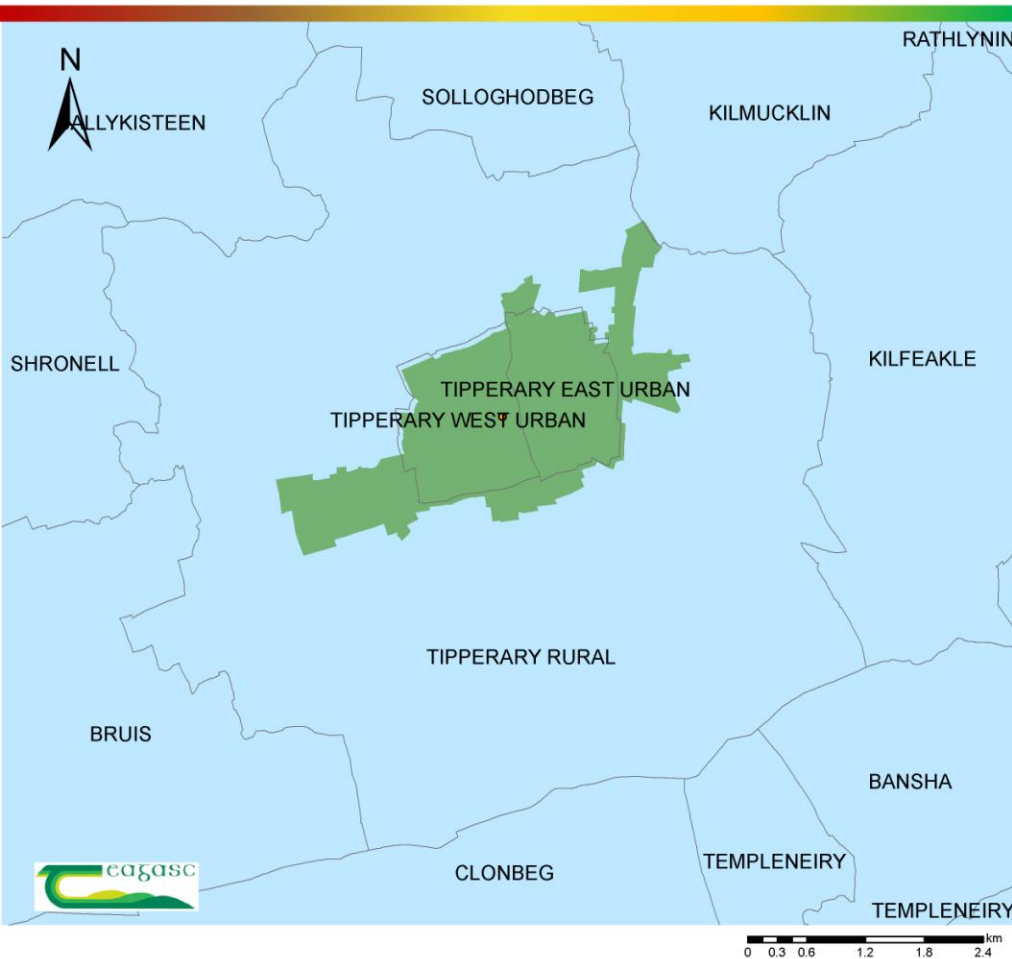


Overview

- Data
- Population Profile (EDs)
 - Population and Demography
- Social Profile (Settlement)
 - Education
 - Health and Disability
 - Socio Economic Structure
- Economic Profile (Workplace Zones)
 - Number and location of jobs
 - Industrial Structure of Employment

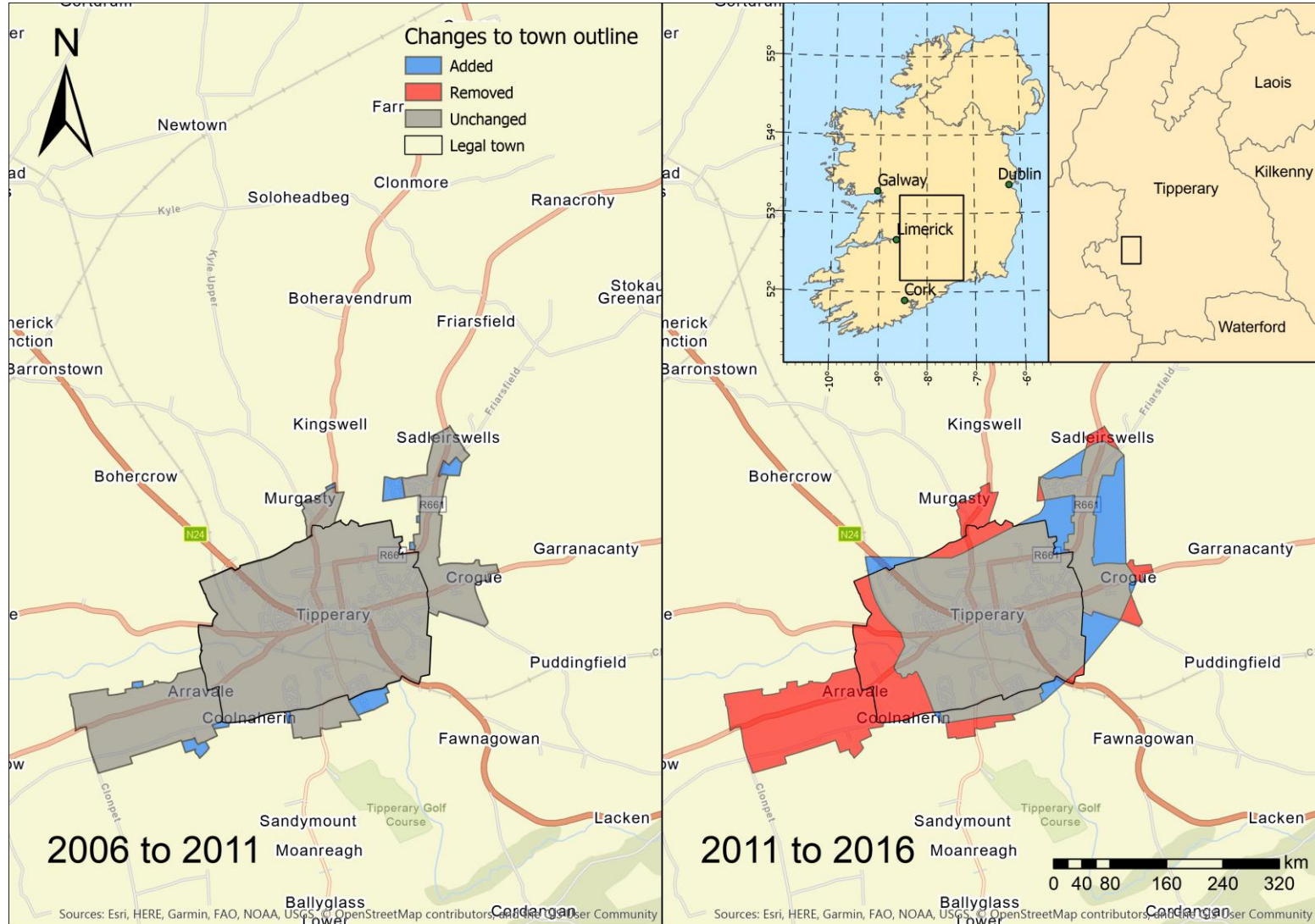
Data

Tipperary Urban and Rural EDs, Town and Environs 2011



- CSO produce a range of data products based on the census
- Definition of the town
 - » Two urban EDs: 4,228
 - » Census Settlement: 4,979
- Issues of data comparability

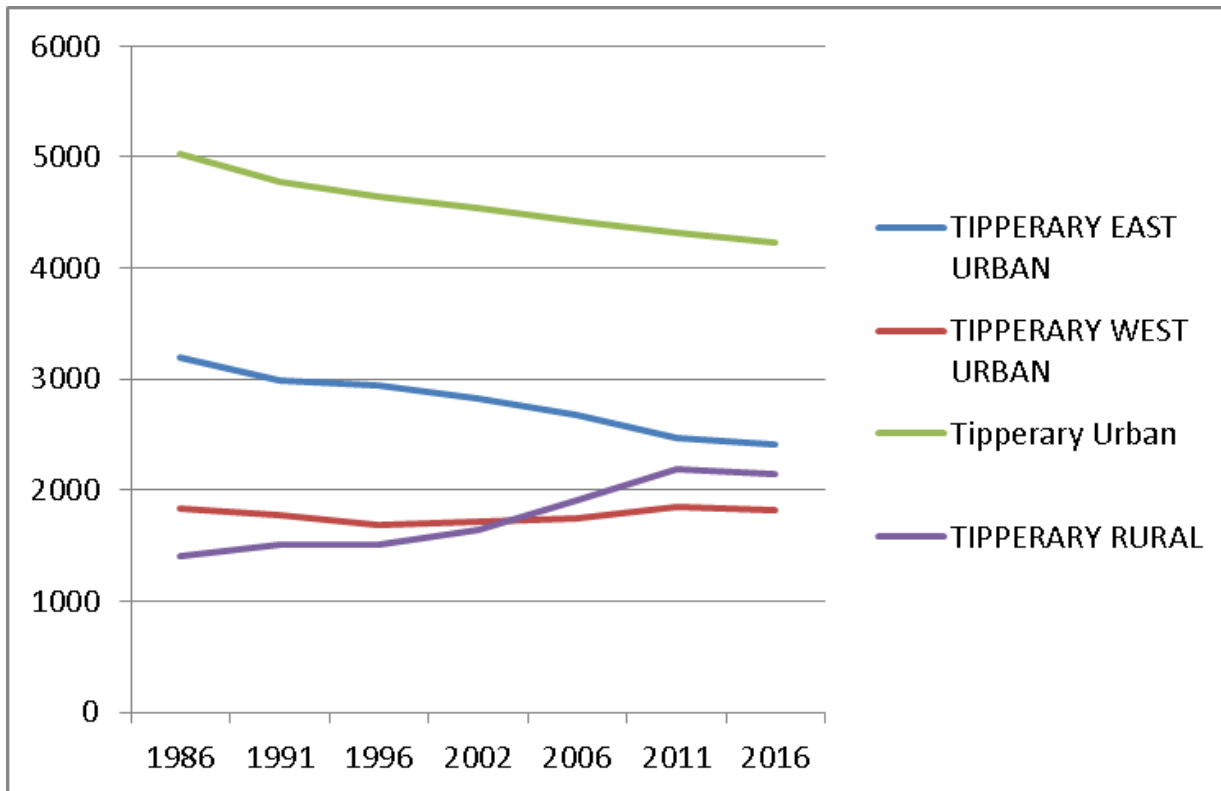
Definition of 'settlement' area



Population and Demography

■ Spatial Units: EDs:

» Tipperary East + West Urban / Tipperary Rural

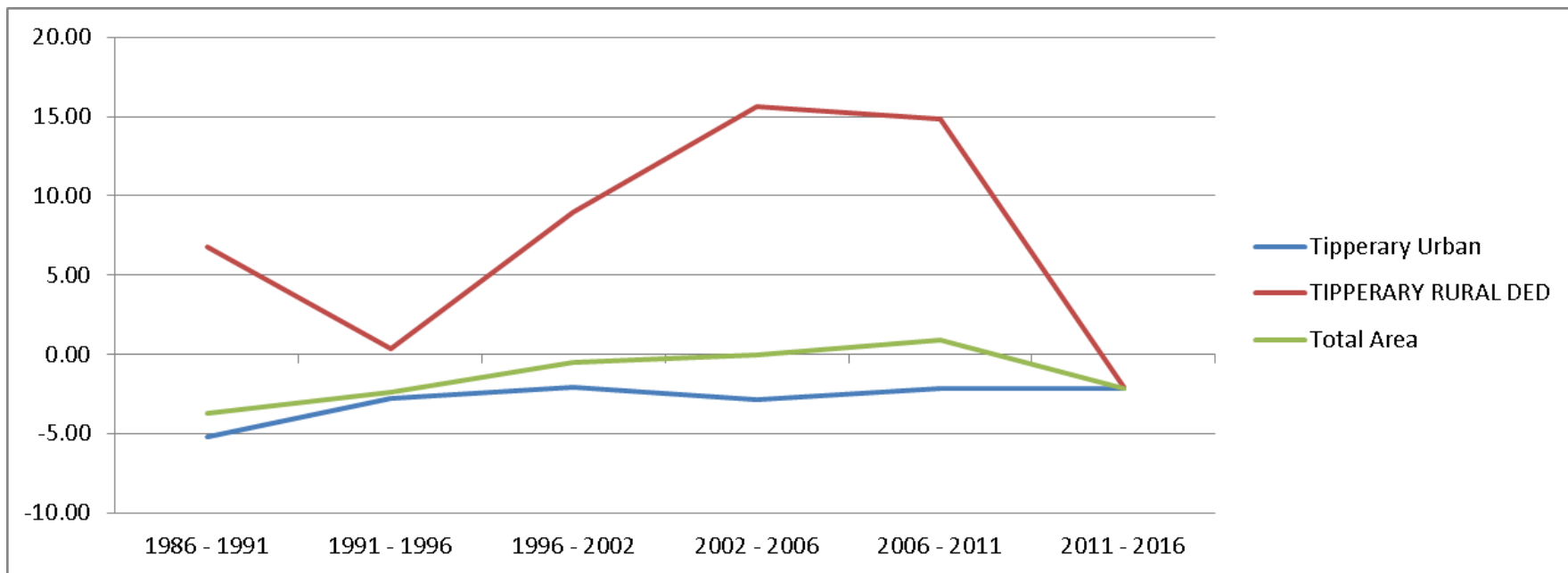


Total Population 1986 - 2016

- 233 (-7.65%)

- Driven by falling town population (particularly T_East)

Population Trends

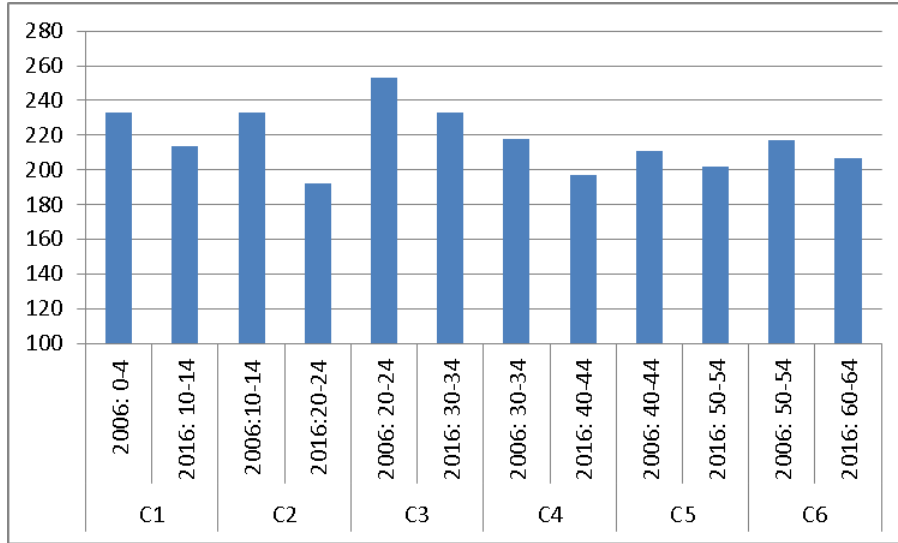


Strong growth in T_Rural ED. Persistent decline in town population.

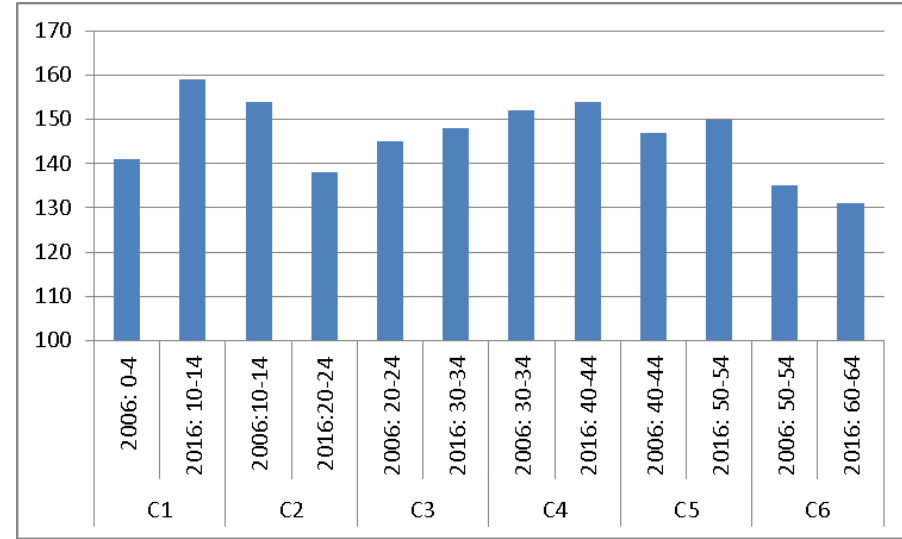
	1986 - 1991	1991 - 1996	1996 - 2002	2002 - 2006	2006 - 2011	2011 - 2016
TIPPERARY EAST	-6.47	-1.54	-3.97	-5.51	-7.74	-2.35
TIPPERARY WEST	-2.95	-4.83	1.36	1.46	6.55	-1.94
Tipperary Urban	-5.19	-2.77	-2.03	-2.88	-2.11	-2.17
TIPPERARY RURAL	6.80	0.33	8.99	15.59	14.86	-2.06
Total Area	-3.71	-2.34	-0.48	-0.05	0.90	-2.15

Demography (2006 – 2016)

Town



Rural



Key Points

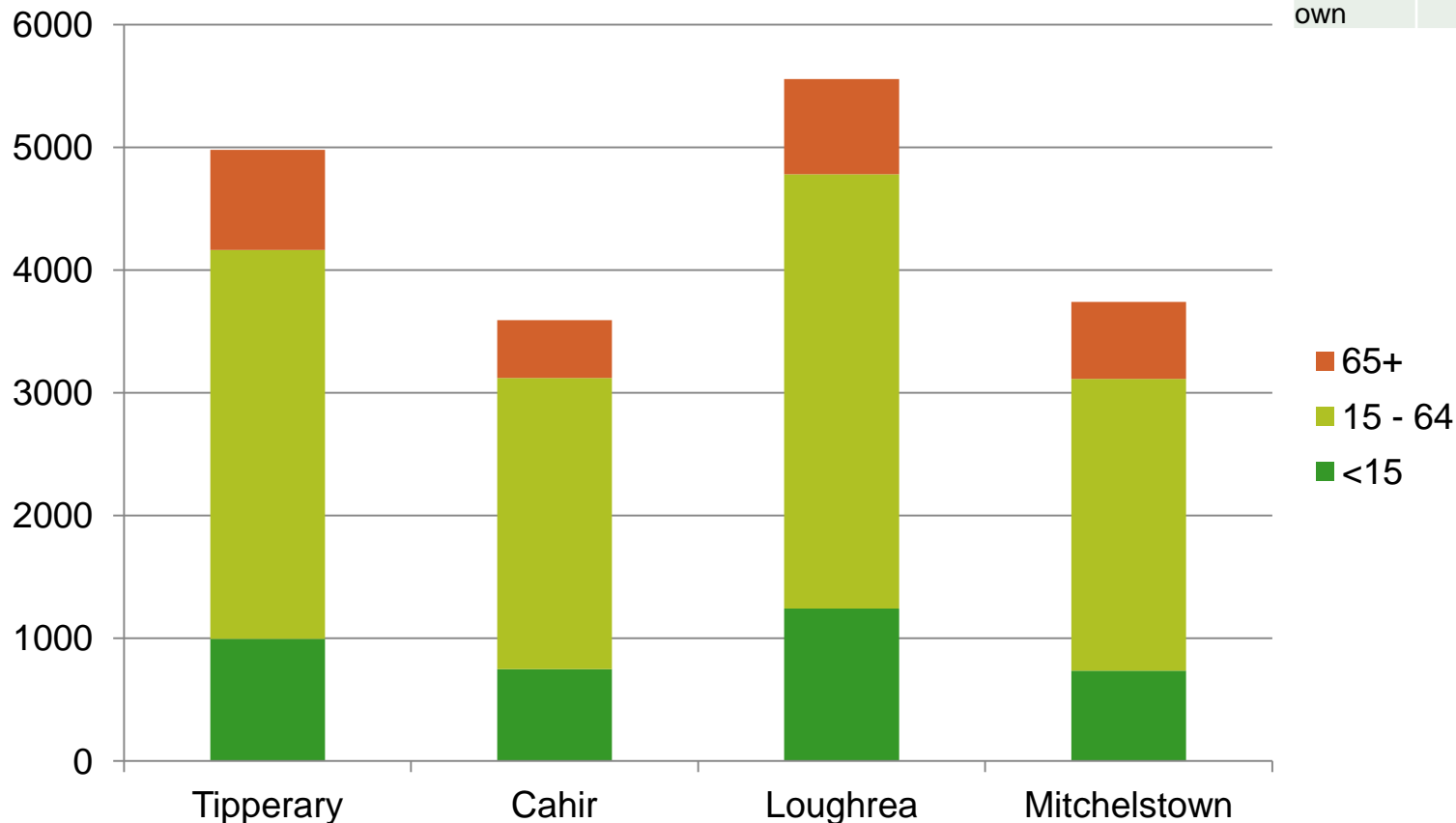
- Persistent Population Decline in the town area since, at least, 1986.
 - Rural area was growing strongly but in the period 2011 – 2016 this trend reversed.
- Decline affecting most cohorts within the population, not just the young.

Tipperary Town

- Data: CSO, 2016 Settlement SAPS
 - https://www.cso.ie/en/media/csoie/census/census2016/census2016boundaryfiles/SAPS2016_ST2016.csv
- Census Town defined by CSO for 2016
- Compare to: Cahir, Mitchelstown, Loughrea
- Focus on the population living within the Census Settlement 'Tipperary'.

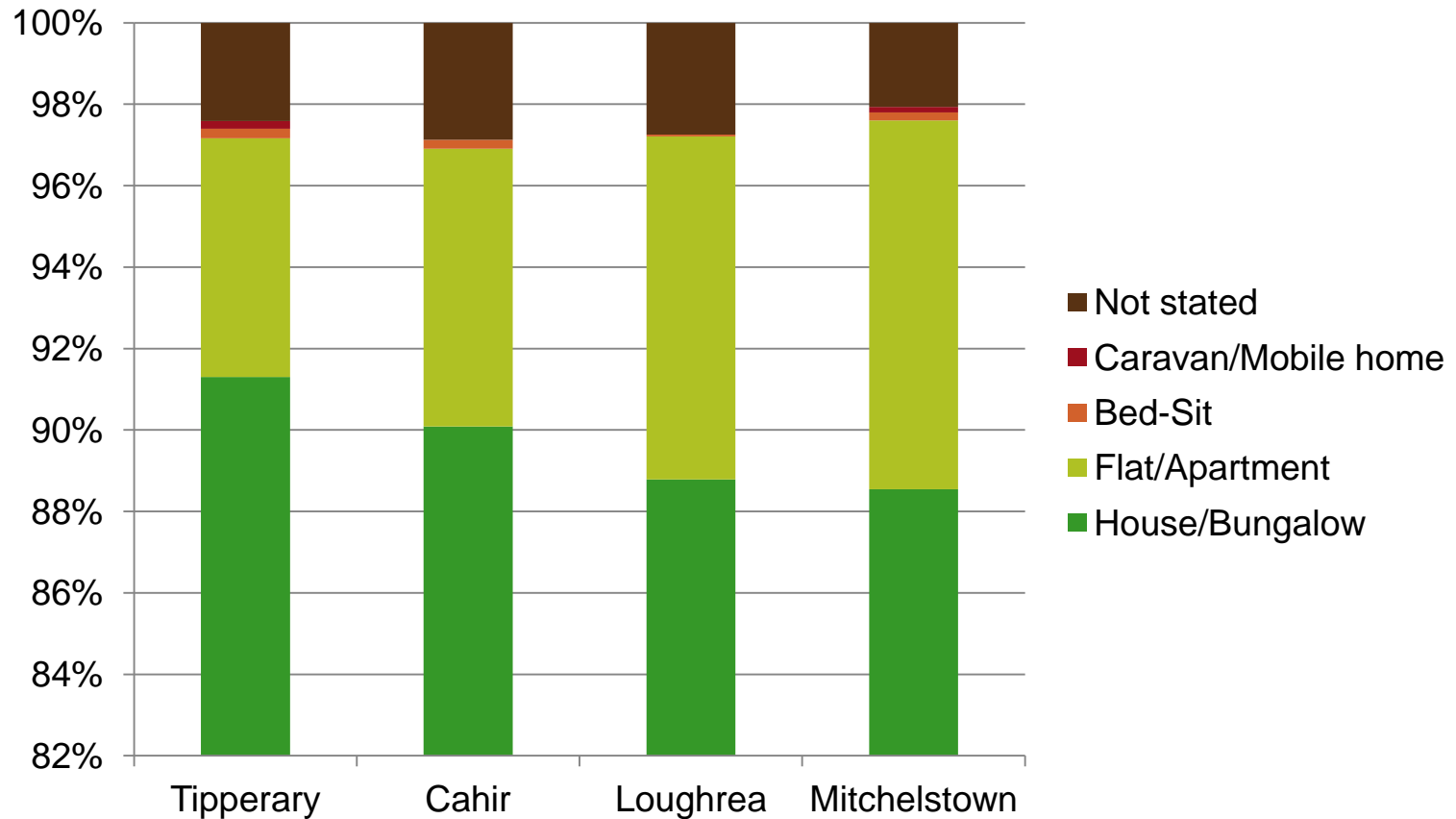
Population

	<15	15 - 64	65+
Tipperary	20.0	63.6	16.3
Cahir	20.9	66.0	13.1
Loughrea	22.4	63.7	13.9
Mitchelstown	19.7	63.5	16.8



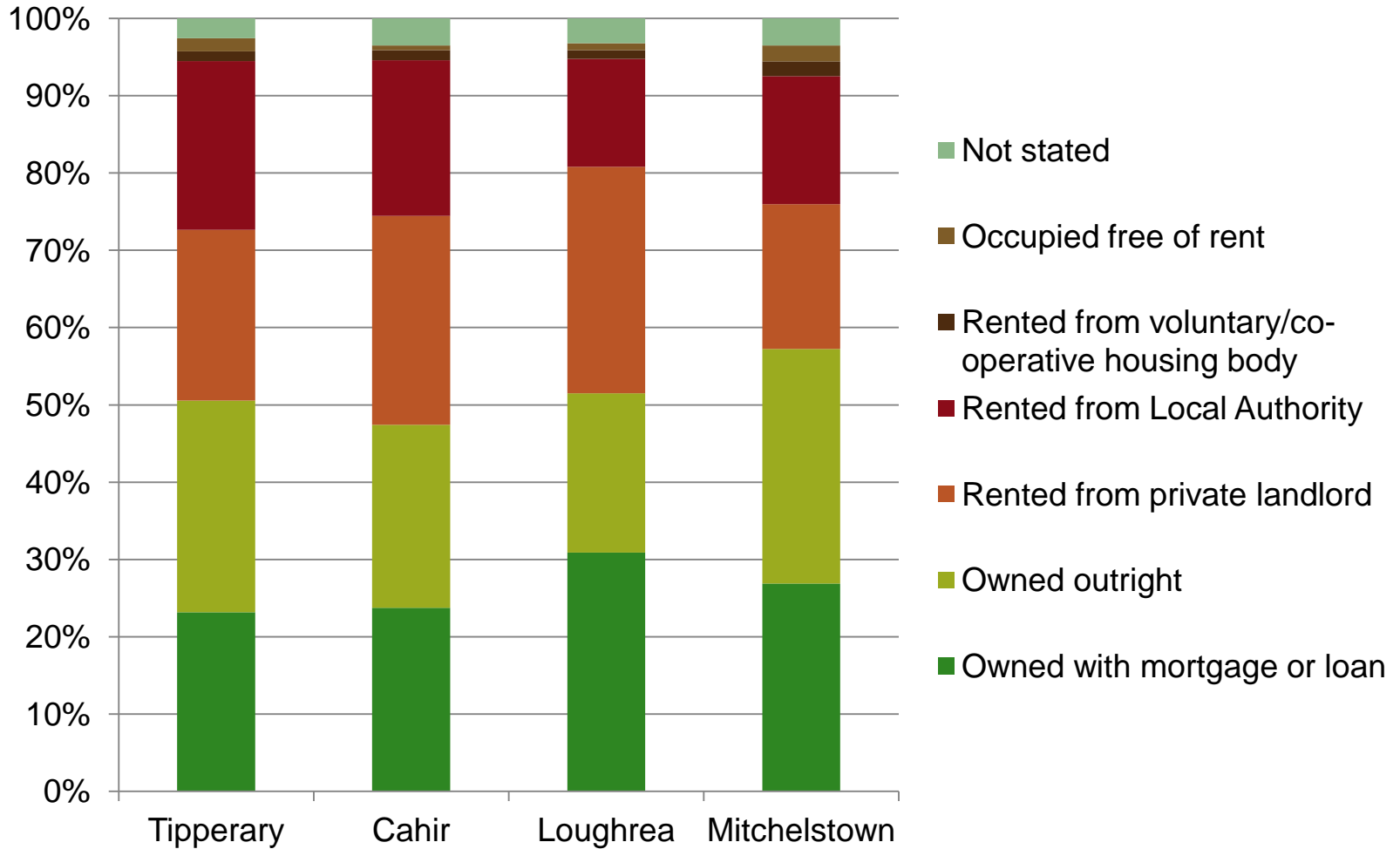
Tipperary: Large population over 65 relative to Cahir / Loughrea. Similar to Mitchelstown.

Housing Type (Households)



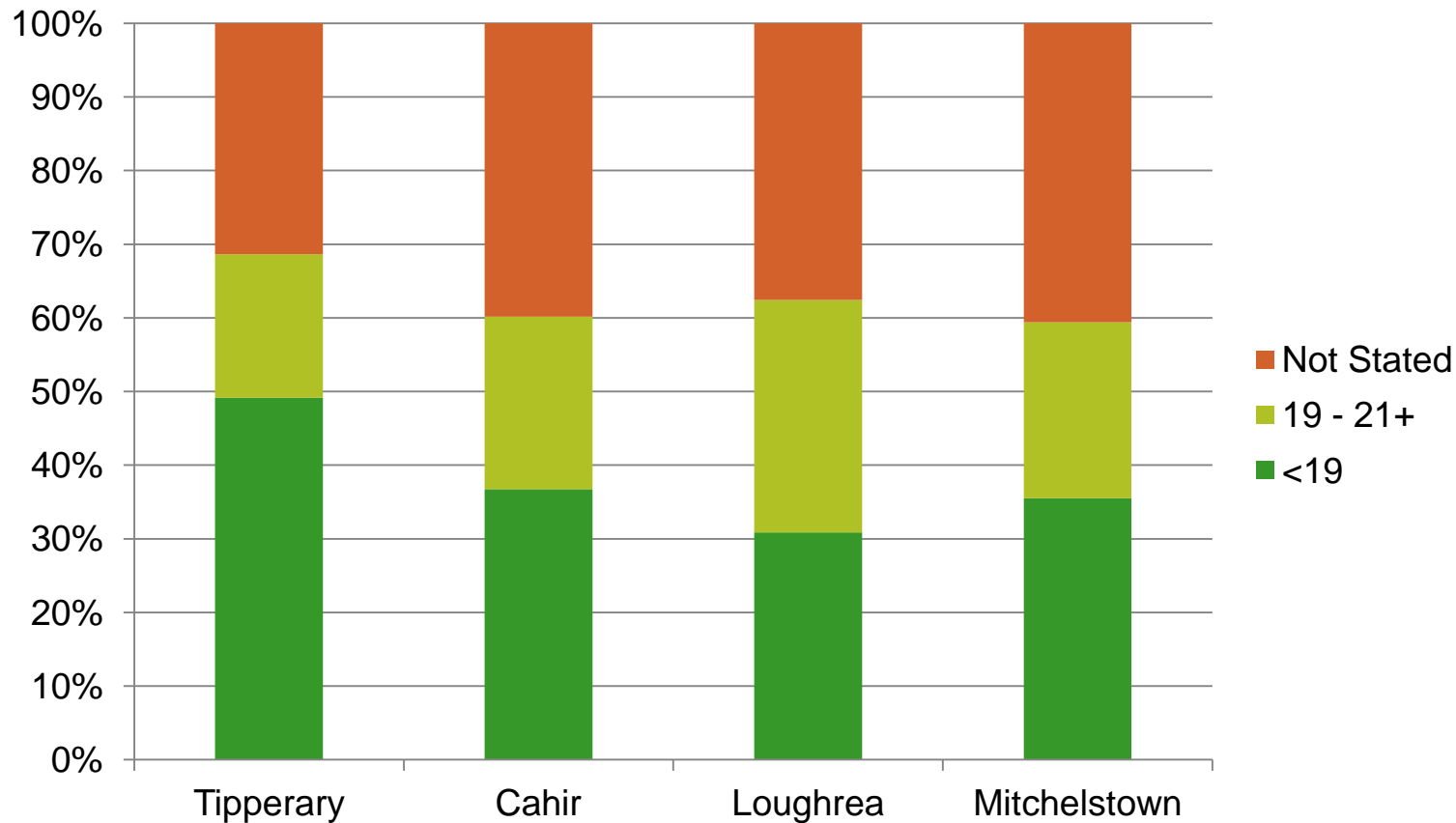
Tipperary: Most households living in houses compared to the other towns.

Housing Tenure



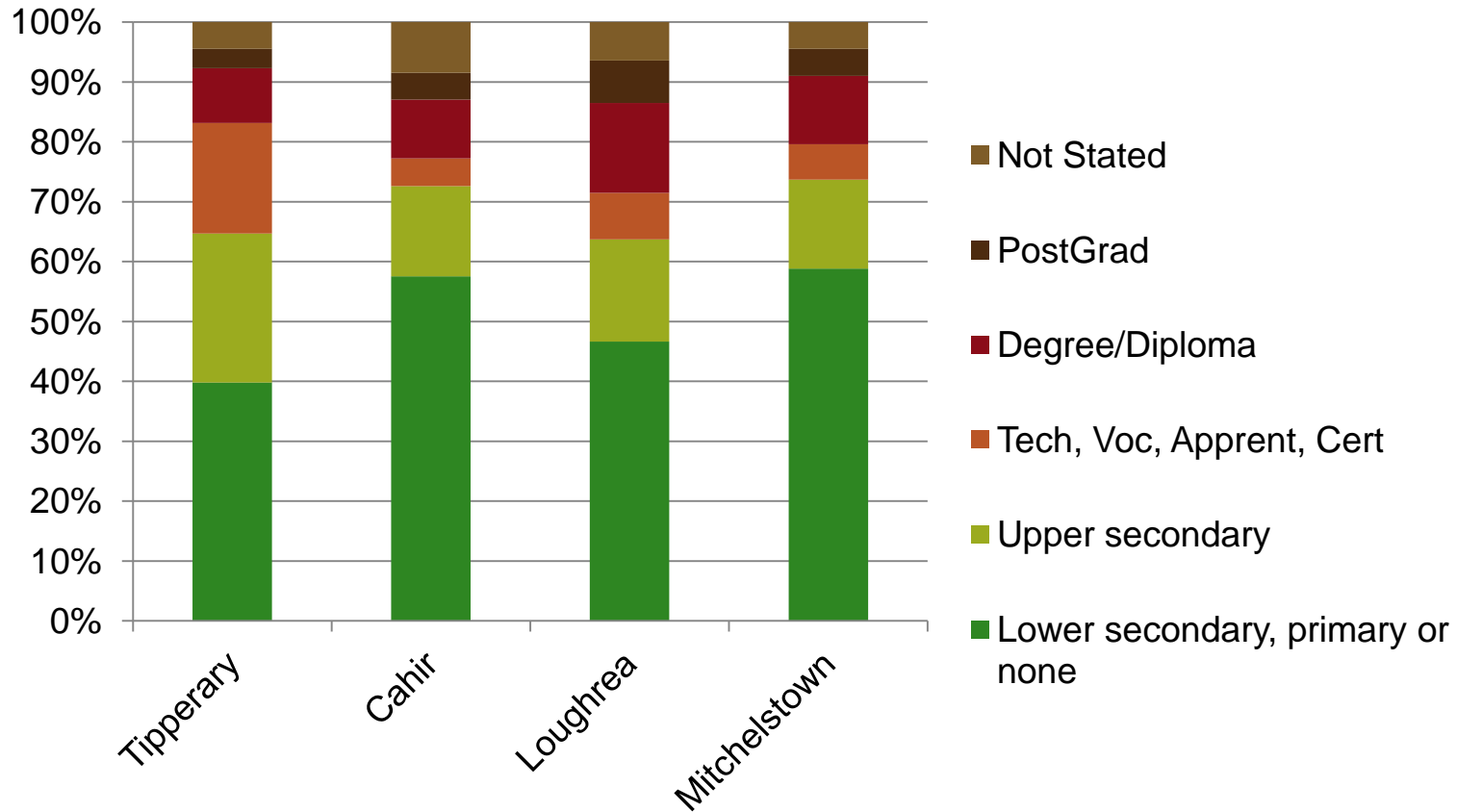
Tipperary: Similar to Cahir. Smaller proportion rented from private landlords. Mitchelstown has a higher level of home ownership.

Education – Age Education Ceased



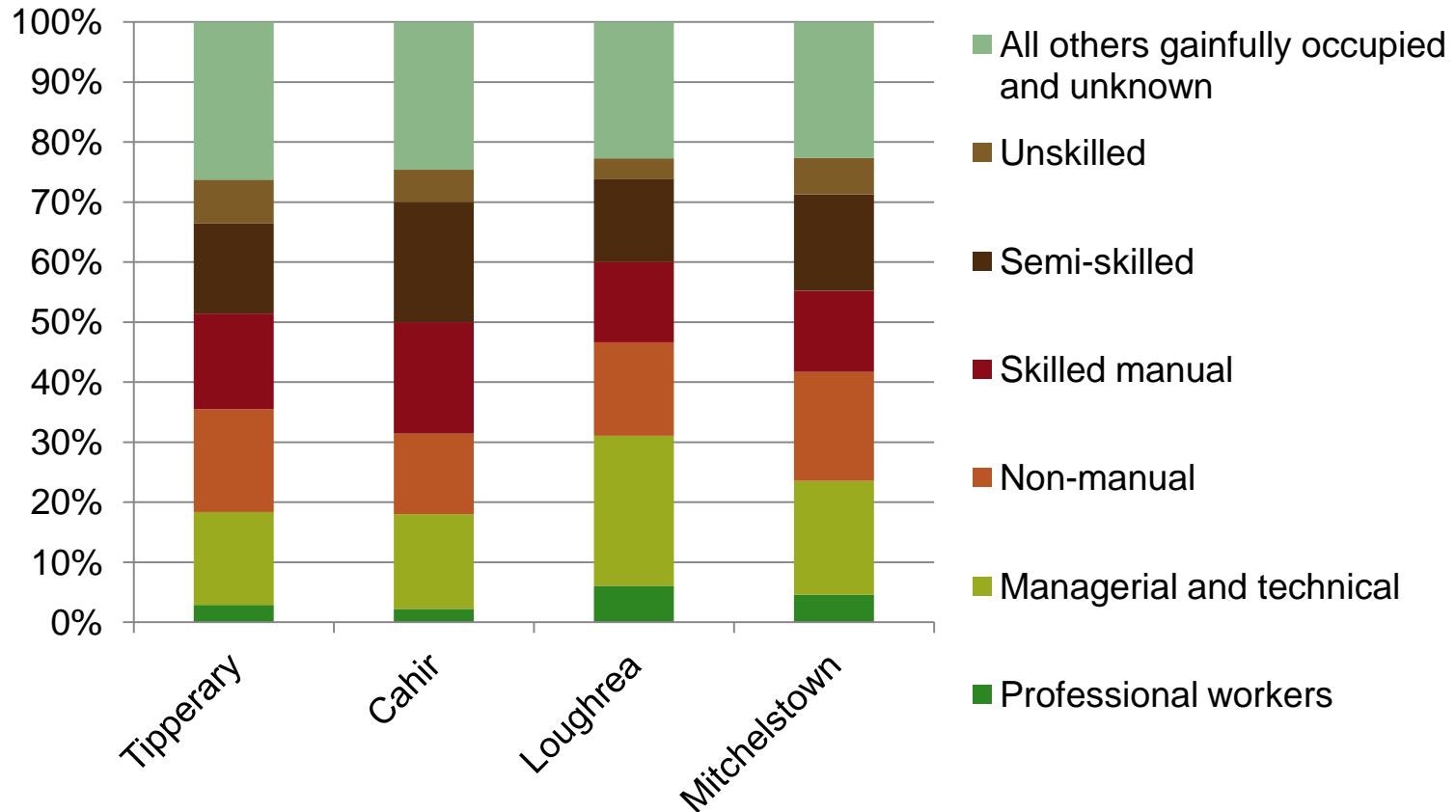
Tipperary: 49% under 19 years of age, BUT, the NS group is the smallest of the four towns. Despite this, the number continuing to higher levels of education is small compared to the others.

Education – Age Education Ceased



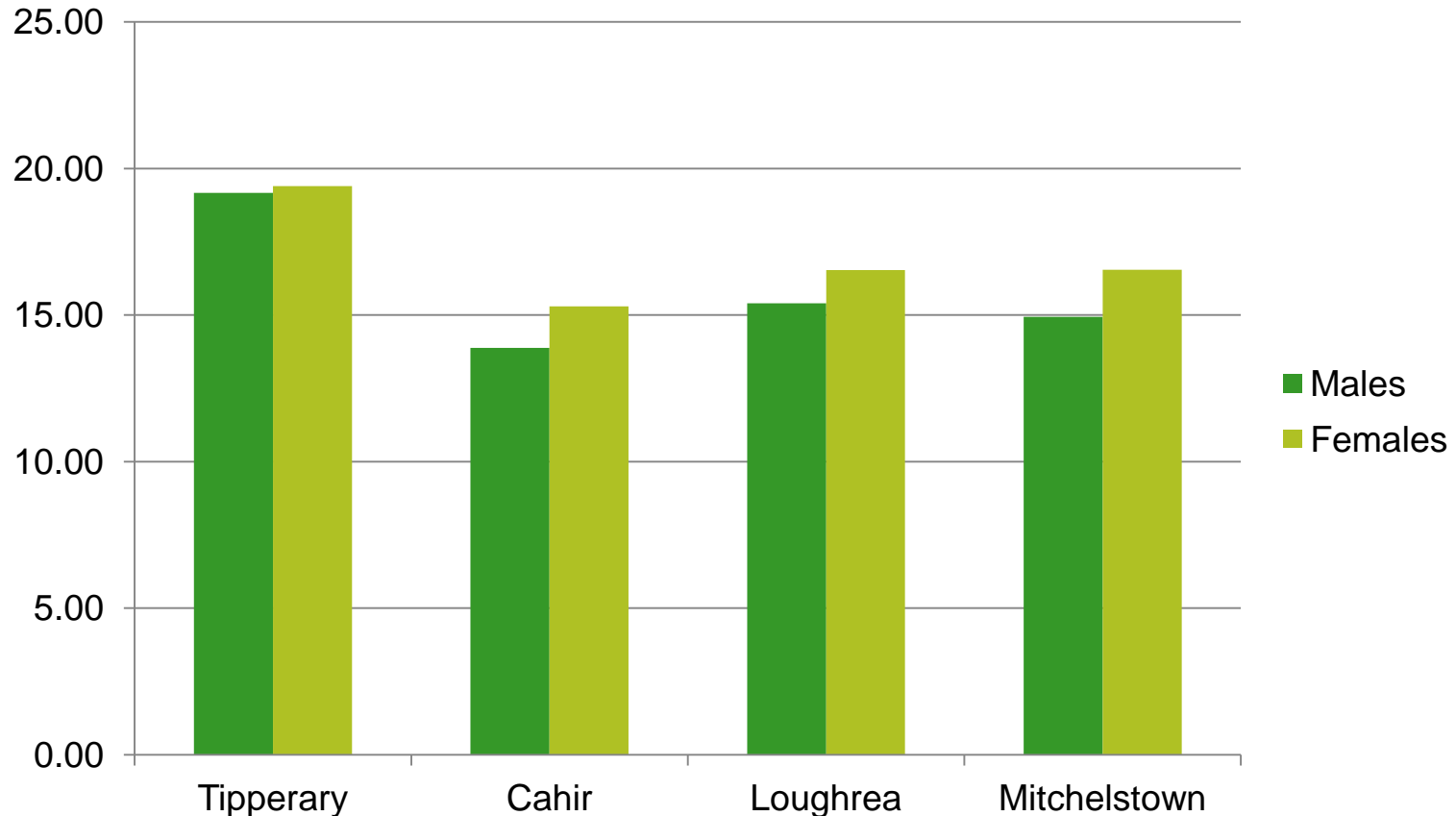
Tipperary: Higher proportions remaining in school through second level but lower progression to 3rd level education. This population is attracted into courses offering technical or vocational qualification, advanced certificate, apprenticeships or higher certificate.

Social Class (At work and unemployed)



Tipperary: Similar to Cahir though slightly larger proportion of Non-manual workers. Smaller share of Semi-skilled but this may be distorted by the large 'Other' group. Relatively large unskilled group – similar to Mitchelstown.

Health – Population with a disability (% of total)

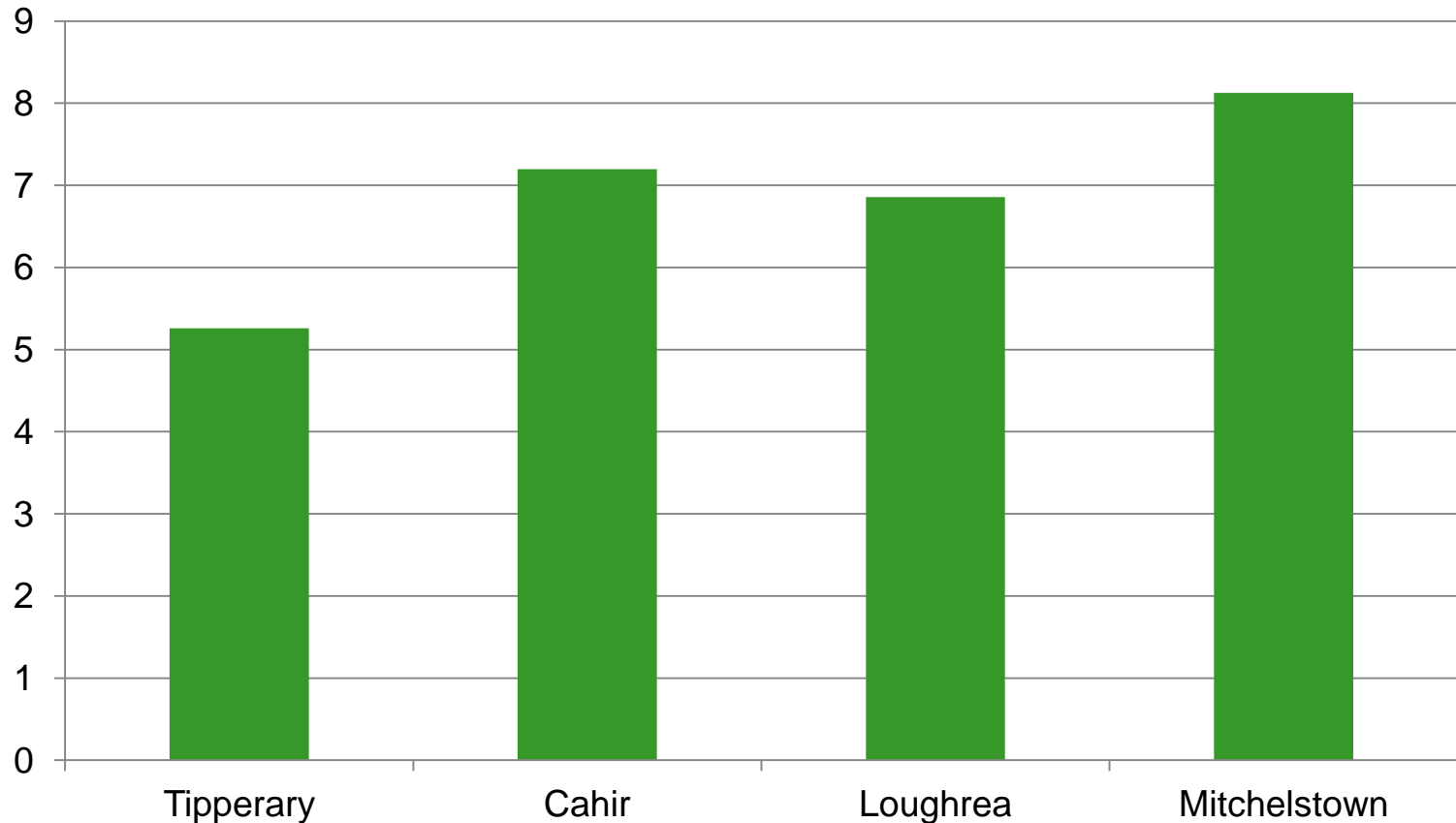


Tipperary:

Substantially higher levels of disability than comparator towns (almost 1 in 5).

Roughly equal percentages of the male and female populations

Health – Ratio of population with VG / G health to those with F, B or VB

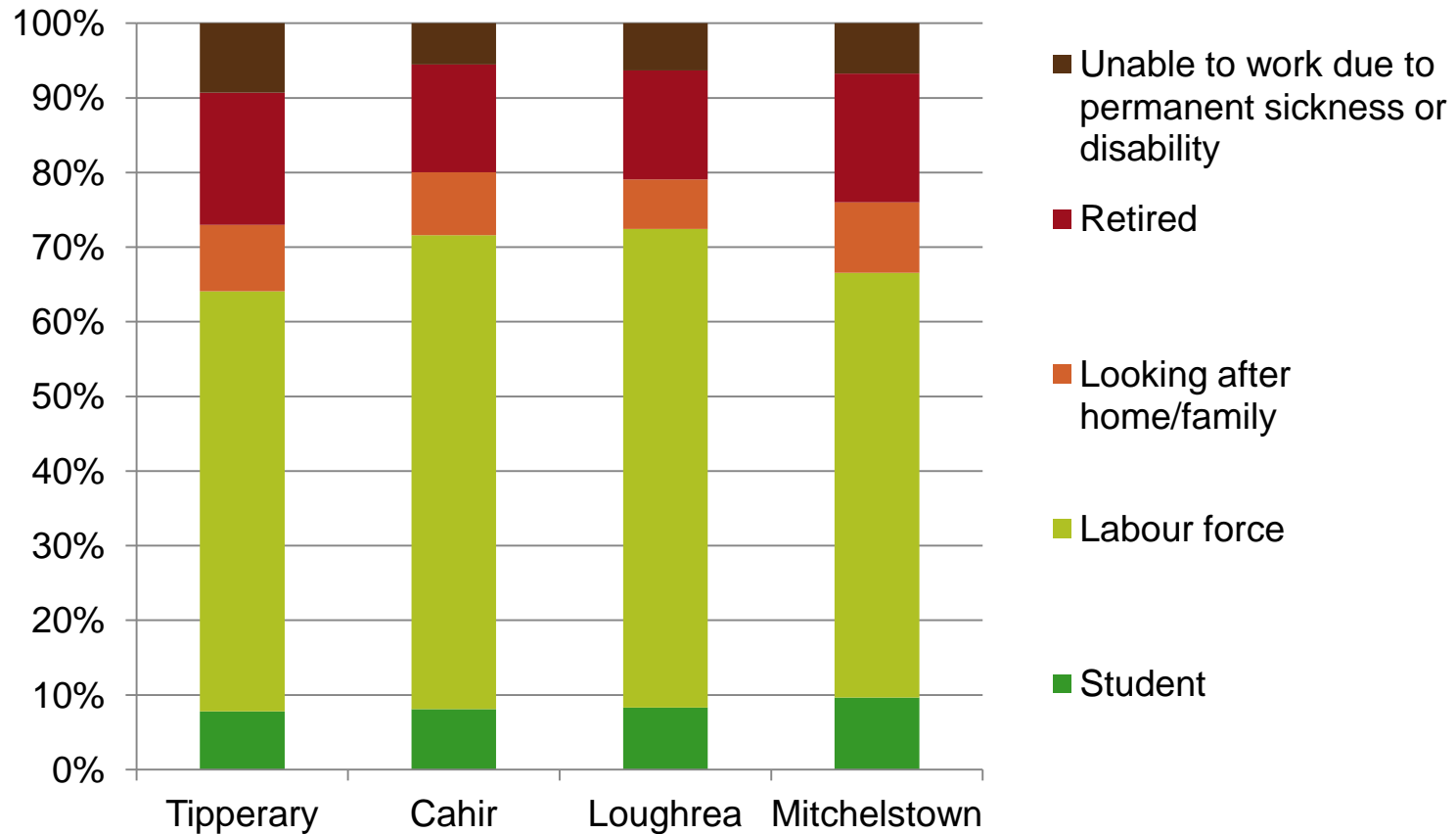


Tipperary:

Wellbeing of the population appears to be less than those of the comparators.

Mitchelstown is interesting in that early school leaving is not impacting on health.

Economic Status of the population



Tipperary:

Smaller labour force (56%) of the total population >15, compared to Cahir or Loughrea. Similar to Mitchelstown in terms of LF and retired. Unable to work is high – related to numbers with a disability.

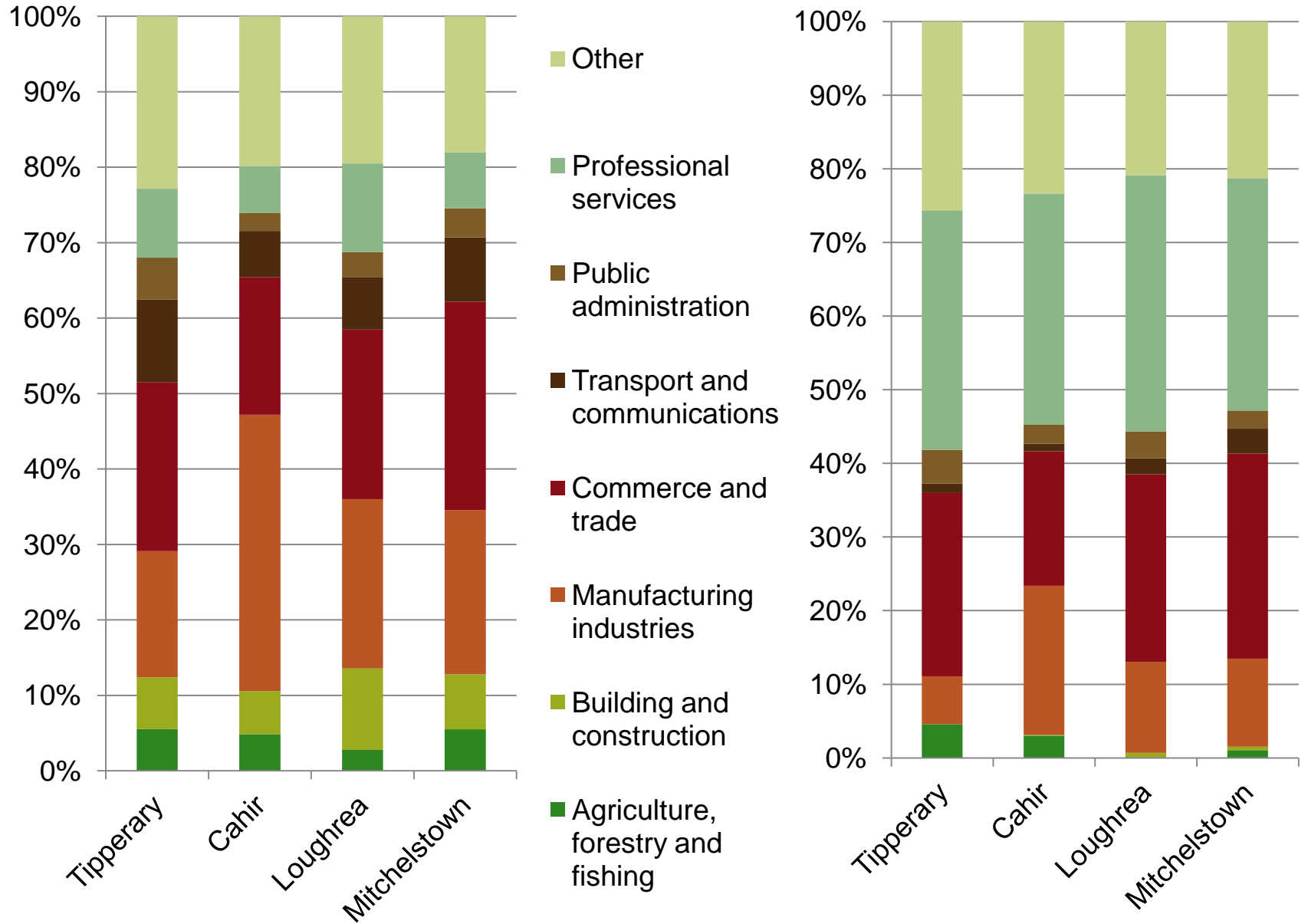
Structure of the labour force



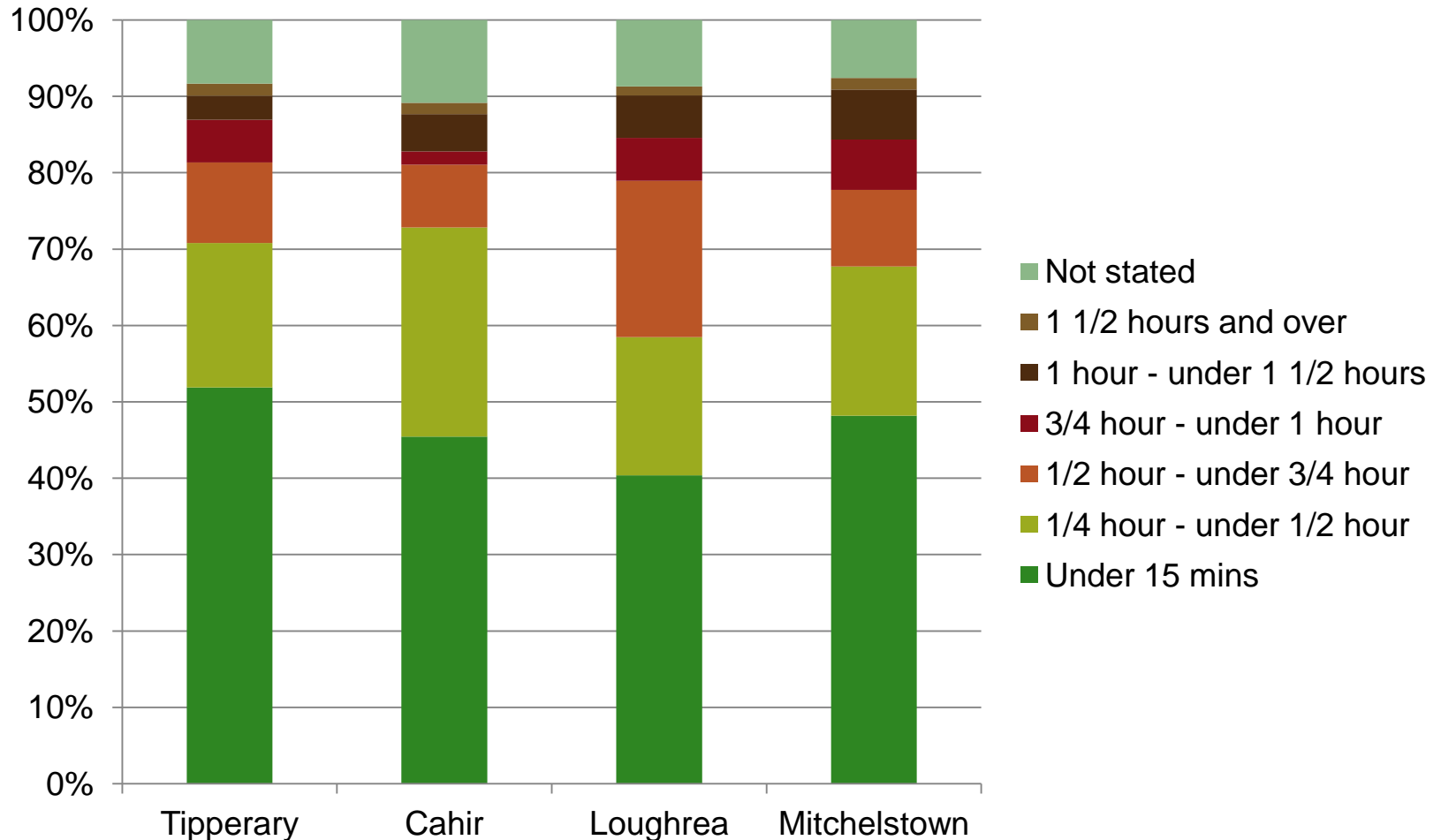
Tipperary: Unemployment rate (24%) is roughly 10 percentage points higher than comparator towns. Though small overall, the looking for first job group is substantially larger also.

Unemployment rates: Males = 27% / Females = 21%

Industrial structure of the workforce



Commuting

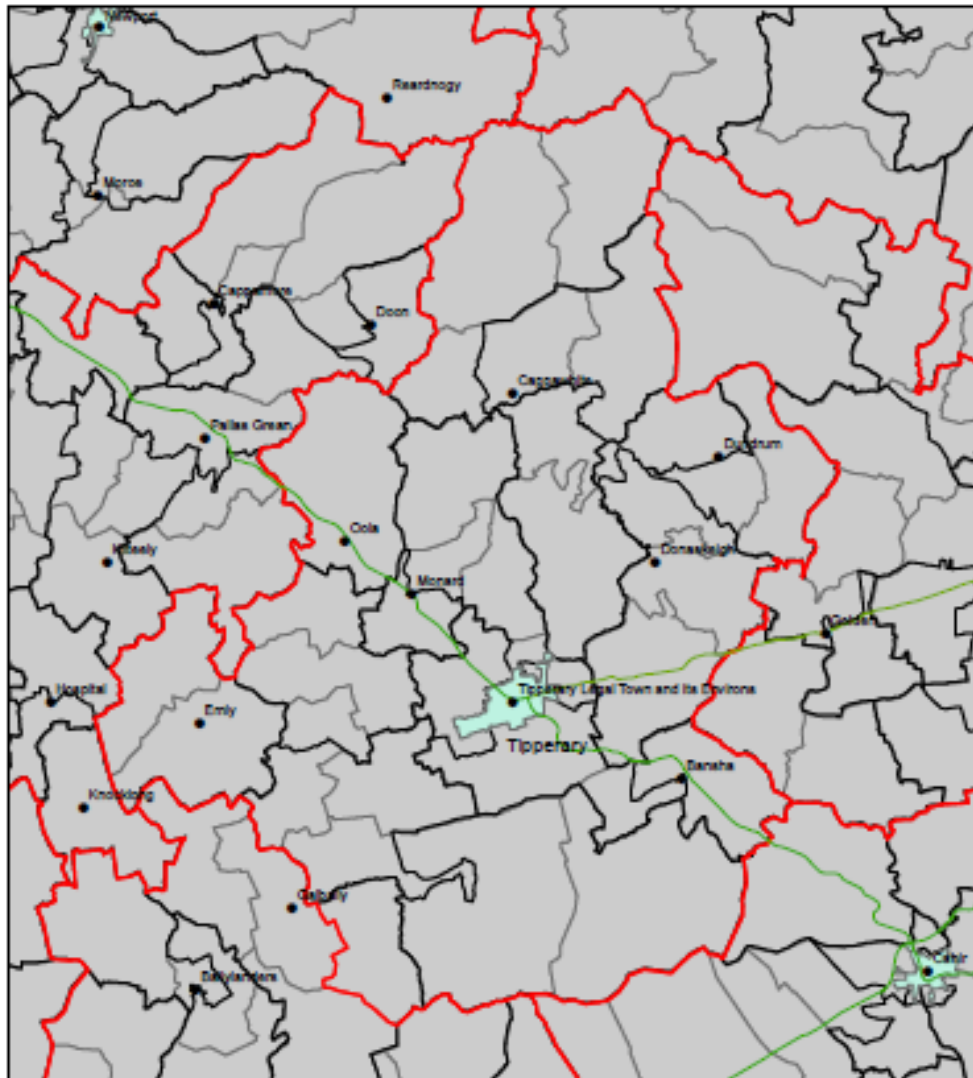


Tipperary: Similar to Mitchelstown and Cahir. Despite being a similar distance from Limerick as Loughrea is from Galway, there are relatively few longer distance commuters.

The pattern points to the importance of the local economy.

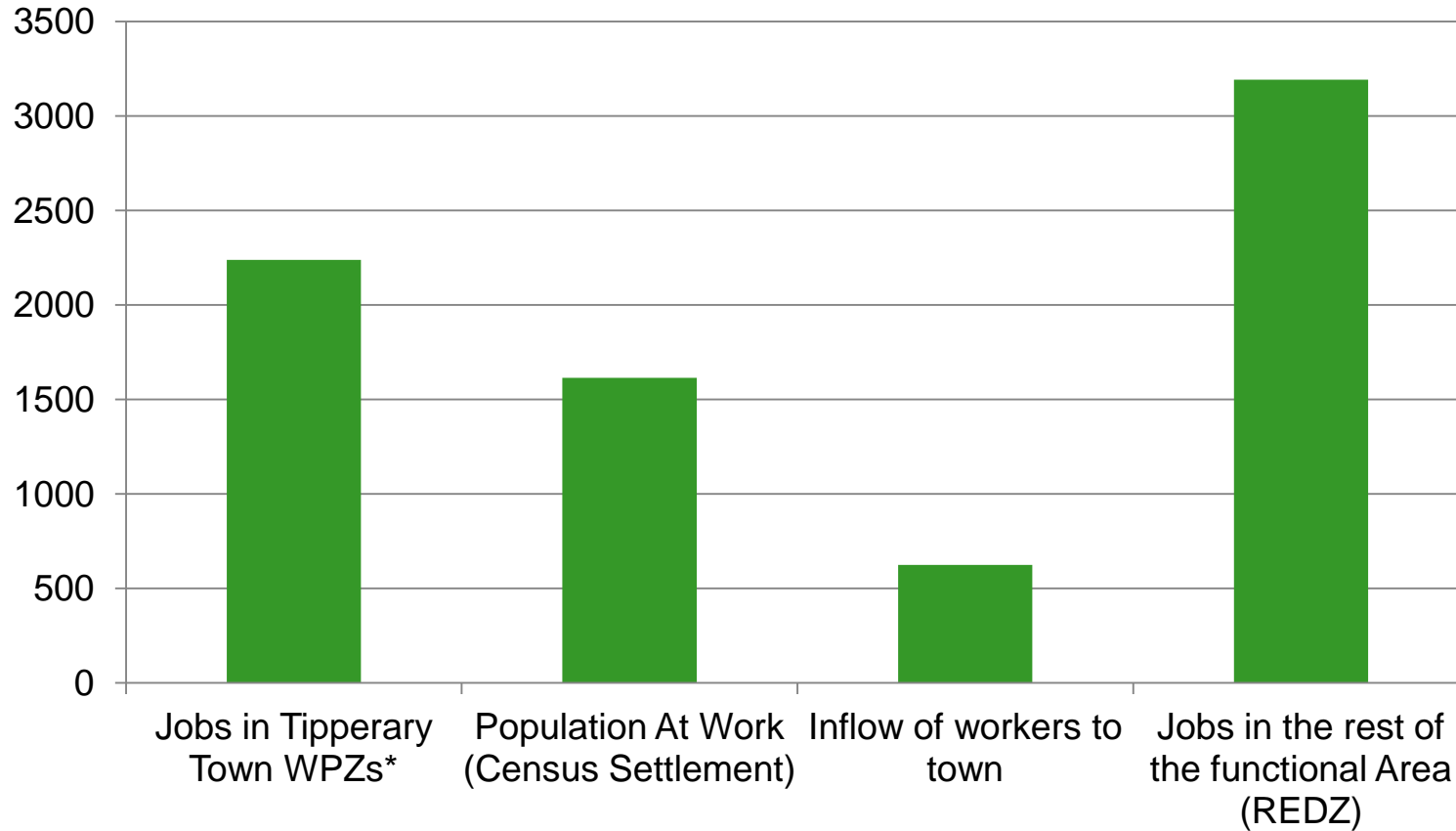
REDZs and Workplace Zones

- Data: CSO, 2016 Workplace Zone SAPS
- WPZ defined by CSO for 2016
 - Where possible all zones to have a range of between 100 to 400 workers
 - Each workplace zone contains a minimum of three workplaces
 - Workplace zones nest within county boundaries
 - No more than 90% of employees in any one workplace zone can work in one organisation.



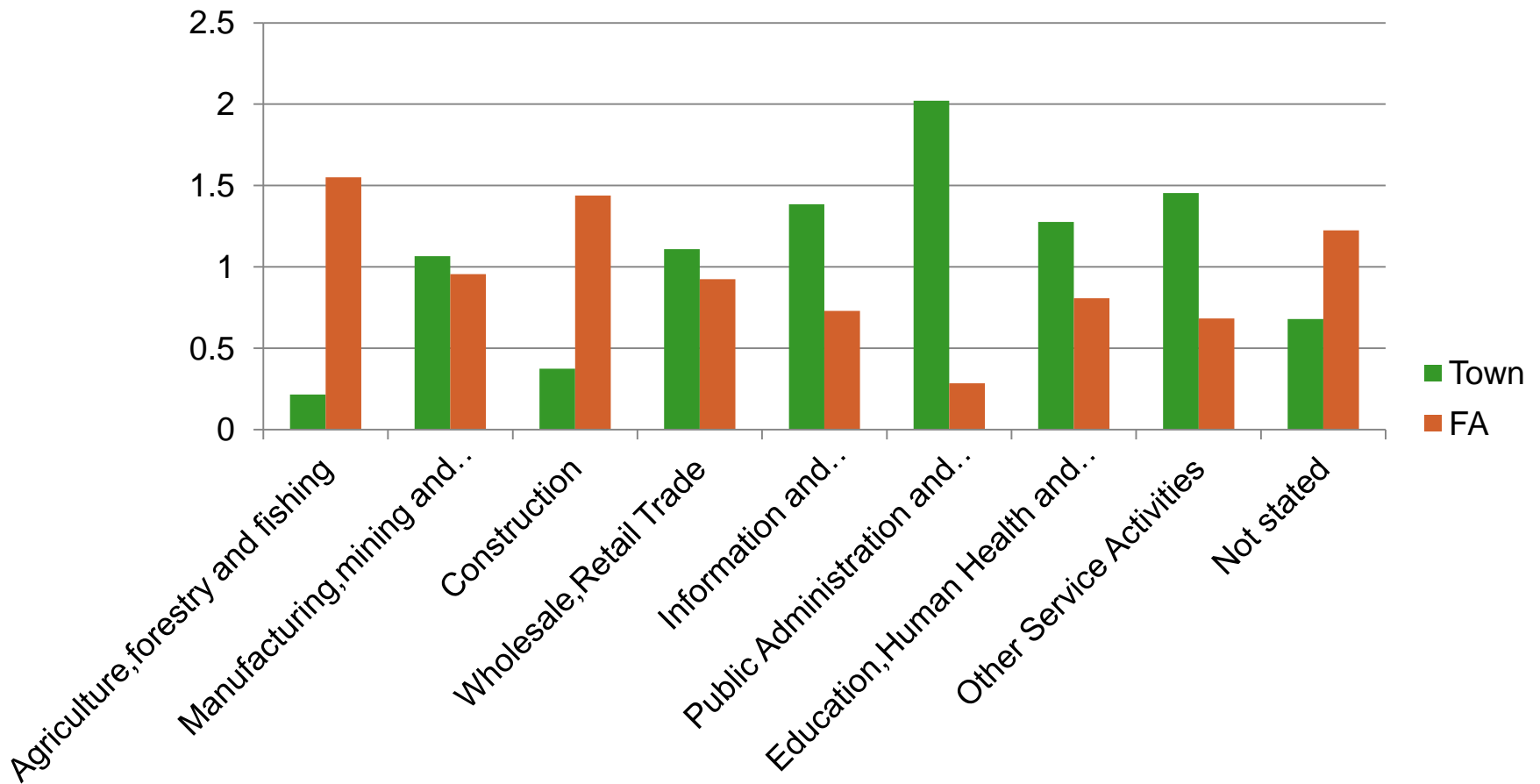
Data Sources: CSO, 2016, Workplace Zone Data
OSI Spatial Data
Map and analysis by David Meredith, Teagasc

Jobs and employment



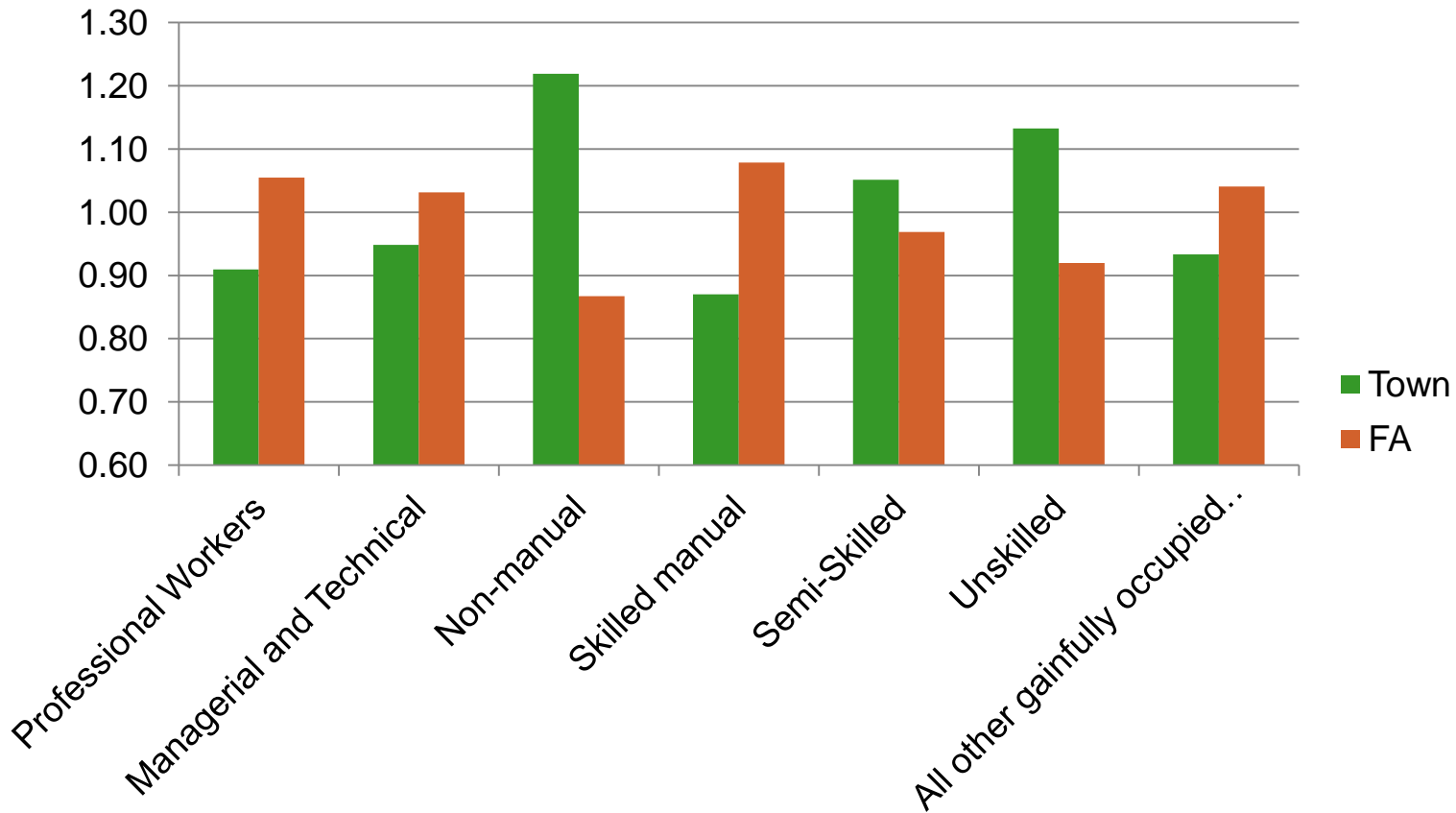
Tipperary: There are roughly 2,239 jobs within Tipperary Town. The population living in the town classified as 'At Work' is 1,615. This highlights the presence of an inflow of workers to the town and demonstrates the importance of the population in the wider hinterland to the town economy.

Jobs and employment



Tipperary Town: Jobs associated with Information and Communication, Public administration, Education, Health and other services are heavily concentrated in the town compared to the wider functional area.

Social Class



Tipperary Town: Higher concentrations of the population, classified by the social class of the reference person, associated with Non-manual, Semi and Unskilled jobs in the town.